





Krista McDaniel  
Interim Executive Director



## A Letter from Leadership

This past year brought seismic shifts to the landscape of domestic violence services in DC. As citywide budget cuts shuttered vital programs like DHS' Family Re-Housing Stability Program (FRSP), the burden on remaining service providers intensified. Yet amidst these challenges, My Sister's Place stood firm—growing more resilient, more connected, and more committed to survivor-centered care.

In the face of rising need and reduced public infrastructure, our team sustained scalable, cost-effective programming to meet our clients where they are. Our Workforce Development and Financial Education initiatives created new pathways to independence. Our Fresh Start Fund delivered critical flexible dollars for job training and certification, transportation, and childcare. We further refined our trauma-informed case management and housing navigation services, and expanded our Resilient Futures Program to build a healing-centered community through peer support groups.

Moreover, MSP invested in infrastructure and staff development, positioning MSP for long-term sustainability. Thanks to sound financial management and continued donor trust, we remain solvent, resilient, and responsive to the needs of the clients we serve.

As we look ahead, our vision remains clear: every survivor deserves not just safety, but opportunity. Together, we will continue to sustain, reimagine what's possible, and evolve—grounded in MSP's long-standing commitment to providing every survivor and their children with safety, stability, dignity, and hope.

Sincerely,

Krista McDaniel  
Interim Executive Director

## About MSP

My Sister's Place is DC's oldest domestic violence shelter and a trusted hub for survivor-centered support. We offer a continuum of care that begins with safety—and moves toward healing, stability, and independence.

Our mission is to shelter, support and empower survivors of domestic violence and their children, while providing leadership and education to build a supportive community.

### OUR CORE SERVICES INCLUDE:

- ✿ EMERGENCY SHELTER
- ✿ TRANSITIONAL-TO-PERMANENT HOUSING
- ✿ 1:1 TRAUMA-INFORMED CASE MANAGEMENT
- ✿ WORKFORCE DEVELOPMENT
- ✿ FINANCIAL EDUCATION
- ✿ HOUSING NAVIGATION
- ✿ CASH ASSISTANCE
- ✿ AFTERCARE THROUGH RESILIENT FUTURES PROGRAMMING

**WE ENVISION A WORLD  
WHERE SURVIVORS ARE  
SUPPORTED—NOT ONLY TO  
SURVIVE, BUT TO THRIVE.**



“

MSP has done so much, and I'm so appreciative. They have ordered school supplies, paid car notes, paid my bills, and I am grateful for everything and can't pick out one moment or experience that is particularly meaningful, because it was all of it...I don't know where I would be without MSP...”

- Angelique,  
MSP Client

PHOTO USED WITH PERMISSION.  
NAMES CHANGED TO PROTECT PRIVACY.

# TOP MOMENTS OF THE YEAR

## All Client Advocates Certified in ACP Enrollment

MSP staff became certified as Address Confidentiality Program assistants, enabling immediate on-site support for survivors seeking to keep their information secure.



## Hands On Dental Assistant Training Partnership Launched with Fast Job Placements

A new workforce pipeline provided hands-on training and rapid job placement in dental careers.



DEVELOPMENT & COMMUNICATIONS TEAM RETREAT, SUMMER 2025.

## Resilient Futures Peer Empowerment Groups Expanded

Survivors found healing and connection through peer-led circles that fostered trust, community, and long-term wellbeing.



## Housing Navigation

MSP added new supports for Transitional Housing clients, providing personalized housing counseling, leasing support, tenant advocacy and in-house inspections.

## RISE Trust + Financial Education Launched New Cohorts

Clients received monthly cash assistance and gained tools to reduce debt, build savings, and set financial goals.

## Impact By The Numbers

**600+** **Total Survivors Served**  
Shelter: 159  
Transitional Housing: 242  
FRSP: 125  
Resilient Futures: 74

**8,277** **1:1 Case Management Sessions**

**80** **Workforce Development Participants**  
Jobs + Paid Internships: 27  
1:1 Consultations: 400+

**\$200K+** **in Cash Assistance** covering 330 requests

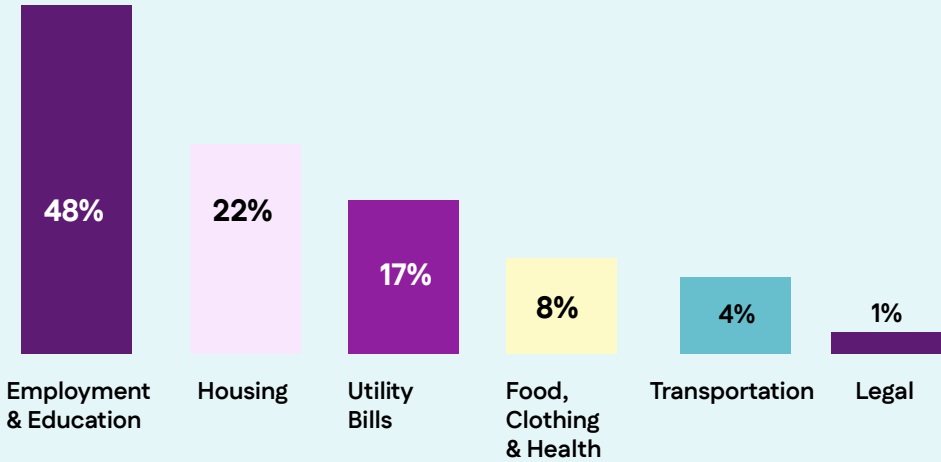
**113** **1:1 Financial Education Consultations**

**2,055** **Referrals provided**      **597** **Hotline calls answered**

**500** **Safety plans developed**      **1,139** **Home Visits completed**

## FRESH START FUND

MSP’s Fresh Start Fund provides cash assistance for emergency expenses, education, and job training and certification opportunities. In **FY2025**, the largest expense category covered by the fund was for education and employment training costs, accounting for over **48%** of requests totaling over **\$98,000**.



## Behind the Numbers: Deavon’s Story

When Deavon first called the DC Victim Hotline, she wasn’t sure if her story “counted” as domestic violence. “It’s kinda domestic violence and not really domestic violence, because it was with my family,” she said. But years of conflict with her family, a violent assault, and a night sleeping in her car with her one-year-old daughter made it clear she needed help.

Deavon called My Sister’s Place and reached an MSP advocate. “Tracy told me, ‘You might as well be on your way up here tomorrow. I’m gonna make sure you are here,’” Deavon recalls. The very next day, MSP called to say a shelter bed was ready.

That moment changed everything.

At MSP, Deavon found safety, support, and the tools to rebuild. She worked with the RISE team, enrolled in a dental program, and secured a job. Today, she and her daughter live in their own apartment—the first time Deavon has ever lived independently.

“MSP helped me so much—school supplies, my car note, my bills,” she says. “I can’t pick just one moment because it was all of it. I’m in a good space now.”

Deavon shares her story in the hope of encouraging others. “If you want better and change, take advantage of the help. A lot of people are scared to. But I don’t know where I’d be without MSP.”



# Building Financial Power: NEW GROWTH IN **FY25**

This year, My Sister’s Place launched our in-house Financial Empowerment Program. Building on what clients told us they needed—debt support, budgeting skills, and financial education and coaching—we created spaces for survivors to strengthen their financial confidence and long-term stability. Through the program, our in-house specialist helps each client build and maintain a budget; create financial goals to support their broader goals as they look ahead to program exit; and provides support to clients with opening bank accounts, building savings, debt remediation, and credit score repair.

## PROGRAM HIGHLIGHTS:

**\$21,417.89**

in high-interest debt paid off

**113 1:1**

coaching sessions with 42 clients across MSP programs

**16**

Financial Education Workshops

Through our Money Matters Workshop Series, hosted in partnership with Capital Bank, **56 clients** registered for comprehensive sessions on topics such as budgeting, credit repair, and building savings. Each workshop was trauma-informed and culturally responsive, led by facilitators who understood the challenges survivors face when navigating systems. One participant shared:

“I was never taught this stuff. It felt so good to sit in a room of women helping each other plan for the future.”

- Financial Empowerment Program Participant

Lastly, as part of our financial education programming, we incorporate financial psychology, guiding clients to become more aware of their “money scripts”, the deep-seated beliefs and behaviors that influence their financial decisions. By creating strategies to reframe these money stories, clients are developing healthier habits and more positive attitudes toward saving and paying bills on time.

# RISE Trust: Transformative **CASH ASSISTANCE**

RISE Trust is MSP’s signature cash transfer program for survivors of domestic violence. This past year, MSP initiated its second RISE Trust cohort, providing 30 families with financial education and **\$500 per month** in basic cash assistance. The RISE Trust program has helped dozens of clients address debts, build credit, and move toward their goals.

The first RISE cohort, which wrapped up at the beginning of the year, saw clients reduce debt, increase savings, and work toward long-term plans with support from their case managers and financial coaches.

“This funding helped me pay off what was holding me back. Now I can save for my daughter’s future.”

- RISE Trust Participant

## A study of RISE Trust’s first cohort, in partnership with the Urban Institute, found that:

- The percentage of children receiving healthcare increased from **68% to 87%**, and access to childcare rose from **52% to 69%** over one year of receiving basic cash assistance.
- Survivors of domestic violence reporting high levels of anxiety decreased from **58% to 37.5%** after one year.
- Participants reported substantial gains in financial stability: **31%** of participants saw their debt shrink, and **24%** exited the program entirely debt-free.
- Roughly **82%** of clients reported being able to meet their basic needs, consistent with the most common use of funds for essentials and utilities.

MSP’s cash assistance paired with comprehensive financial education enables clients to stabilize and work toward long-term financial independence.



# Workforce Development: PATHWAYS TO INDEPENDENCE

MSP’s Workforce Development program experienced dramatic growth this year, thanks to new and expanded partnerships, targeted investments, and client-centered design. We connected clients with job fairs, credentialing opportunities, and career pathways that fit their lived experiences and immediate needs. We continued to leverage partnerships with job training programs for higher-paying jobs through partners including Hands On Dental, Archangel Security, the HOPE Project, and the University of the District of Columbia.

## Program Highlights

- ✿ **RECORD-BREAKING JOB FAIR:** Our spring fair welcomed dozens of employers, training partners, and over **50 CLIENTS**. Many secured interviews on the spot.
- ✿ **HANDS ON DENTAL PROGRAM LAUNCH:** A new partnership offering dental assistant training that leads to rapid job placement. Most participants secured employment within **30 DAYS** of completing the program.
- ✿ **INDIVIDUALIZED CARE:** Over **400 1:1 WORKFORCE DEVELOPMENT SESSIONS** held with **80 CLIENTS**, paired with monthly workshops.
- ✿ **EMPLOYMENT:** **27 CLIENTS** achieved employment or a paid internship after program referral.
- ✿ **FRESH START FUND:** The Workforce Development program strategically used our Fresh Start Fund to cover over **\$98,000** in education and employment training requests.



WORKFORCE DEVELOPMENT  
FAIR. MAY 2025

## Success Stories:

- ♥ Nina completed a CDL class with support from MSP and later accepted a job with Metro;
- ♥ LaToya completed IT training and attained a paid internship with a tech company;
- ♥ Felicia completed dental assistant training through Hands on Dental and attained full time employment with a dental office.

“IT WASN’T  
JUST A JOB.  
IT WAS SOMEONE  
BELIEVING IN ME.”

— Workforce Program Participant

# Housing Navigation: EXPERTISE THAT MOVES CLIENTS FORWARD

This year, MSP built out our **Housing Navigation** program to better support clients with complex housing barriers. Our in-house Housing Navigator helps clients navigate the housing system, advocates for tenant needs, educates clients on leases, utilities, and the rental process, and builds relationships with landlords to secure quality housing for MSP’s transitional housing programs.

## Key results:



Clients now move into their rental units **within 1-2 weeks** of rental application approval, which is far below the DC Rapid Rehousing average of 15-30 days.



MSP’s Housing Navigator became a **certified Housing Quality Standards Inspector** to better assist clients in the housing placement process.



Clients facing eviction, utility shutoffs, or housing ineligibility **received direct support to resolve barriers and move forward.**



Clients are better prepared for program exit due to **individualized education and support.**

## Resilient Futures & Peer Empowerment

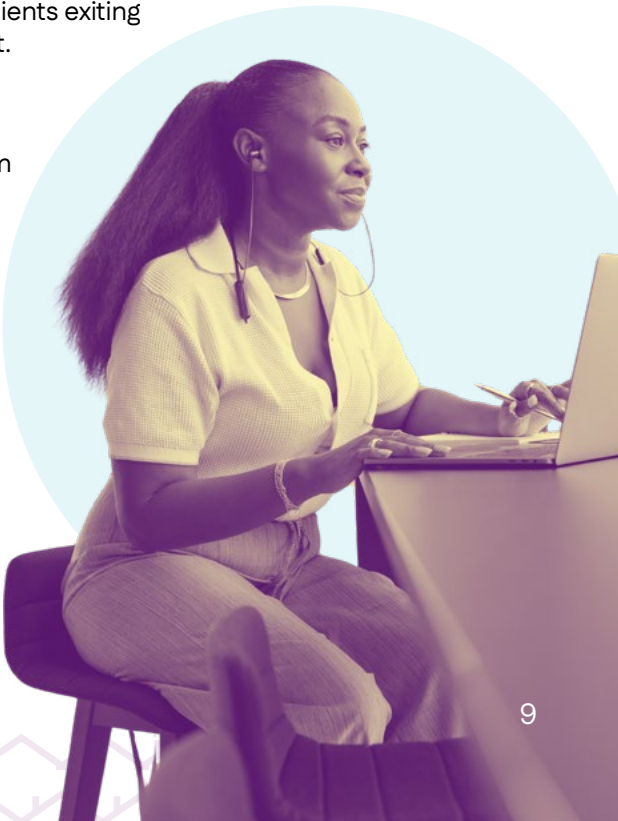
MSP grew our **Resilient Futures** program this year to better support clients exiting our housing programs and provide community even after program exit.

Through Resilient Futures, clients access case management, peer support, financial education, workforce development, referrals, and emergency cash assistance for up to 12 months after housing program exit. **Participation in Resilient Futures more than doubled this year, engaging 74 clients.**

Mostly importantly, through **the launch of Peer Empowerment Groups**, survivors reduced isolation and built networks with other survivors rooted in trust and shared experience. The groups provided space to discuss trauma, parenting, wellness, and next steps—facilitated by caring, trauma-informed staff.

“RESILIENT FUTURES SAVED MY LIFE.  
IT REMINDED ME I’M NOT ALONE.”

— Peer Empowerment Group Participant



# A Trail of Connection and Courage: DOMESTIC VIOLENCE AWARENESS MONTH

This year, MSP brought hundreds of neighbors together along the Metropolitan Branch Trail for our **Walk.Sip.Support** event, a vibrant gathering where survivors, their families, volunteers, and partners united in support of survivors.

At Alethia Tanner Park, **The Clothesline Project** transformed the space with survivor voices, each message a declaration that healing is possible when a community stands behind them.



TEAM MSP AND  
COMMUNITY  
MEMBERS AT OUR  
WALK.SIP.SUPPORT  
+ CLOTHESLINE  
PROJECT EVENT.  
OCTOBER 2025.



Together, the event contributions helped MSP raise funds for our Sponsor a Family program, providing holiday gift cards to more than

## 100 FAMILIES.

Over **50 volunteers** supported our event, including students from **Howard University, American University, and George Washington University**. Community partners, including **Journey to Self, DC Forensic Nurse Examiners, Bright Beginnings, and Legal Aid DC**, also helped ensure that attendees had access to information on other DC community resources.

The generosity of our community made this impact possible. Four local breweries, **WunderGarten, Lost Generation Brewing, Metrobar, and City-State Brewing Company**, anchored the Walk.Sip.Support event with openhearted hospitality. DVAM prizes and local business gifts elevated the event, thanks to the contributions of **Chef Geoff's, Red Hen, Spin Time Records, Wolf Trap Foundation for the Performing Arts, VIDA Fitness, and Kendra Scott**.

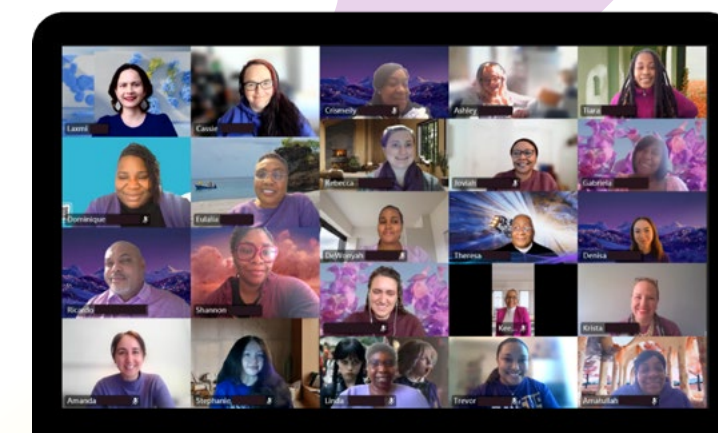


"I'm really passionate about raising awareness around domestic violence, and these are great opportunities for us all to come together as a community."

-American University  
Student Volunteer

"The GW chapter of Sigma Delta supports My Sister's Place as our local philanthropy. Over the past few years, I've gotten to know the staff and the organization, and I really believe in their mission and all the incredible work they do."

-George Washington  
University Student Volunteer



Purple Thursday  
AT THE OFFICE





HOWARD UNIVERSITY PLAYGROUND PROJECT



BOO BASKETS FROM AXO



MSP STAFF AND BOARD AT DACHA'S DENIM DAY FUNDRAISER



## The Community Behind Every Survivor: OUR VOLUNTEERS & PARTNERS

Throughout the year, civic, campus, and corporate partners strengthened MSP's mission by showing up when survivors needed them most. Groups such as Evans Consulting, AU's Alpha Chi Omega (AXO), Goods for Good, Giving Together, Howard University, The George Washington University, and University of Maryland hosted drives and amplified MSP's work. Corporate partners Accenture and Wellpoint-DC deepened their commitment through space, funding, and hands-on volunteerism.

## In-Kind Giving Soars

Our top in-kind donors provided the essential items that help transform MSP's housing programs into true homes. Kings Hawaiian donated 32 brand-new bikes and helmets. DC Run Crew, Goods for Good, Takeda Pharmaceuticals, Rebelle With a Cause, Quist, Groove Phi Groove, and dozens more filled our shelves with diapers, food, toys, hygiene kits, school supplies, and comfort items that wrapped families in care.

This year's **BACK-TO-SCHOOL DRIVE** demonstrated the impact of collective efforts. Individual donors contributed over \$1,400, surpassing our goal, with additional support from Target, Borger Residential, Costco, US Office Solutions, and Office Depot. This assistance helped ensure that students could start the school year without worrying that they wouldn't have the necessary supplies to learn.

Overall, the **FAIR MARKET VALUE FOR ALL OF THE IN-KIND DONATIONS MSP RECEIVED WAS AN ASTONISHING \$107,736.00.** We are beyond grateful to our generous community.

KINGS HAWAIIAN BIKE DRIVE



AXO KICK-OFF EVENT, RAISING 10K FOR MSP

## Volunteer Impact Shines

Along with the incredible volunteers who came out for DVAM, **HOWARD UNIVERSITY** joined My Sister's Place in August for our Playground Project. Students helped clean up our playground area, scrubbed the equipment, and assisted with sweeping up leaves. Volunteers from Howard also helped plant some new flowers at the shelter for curb appeal with the help of MSP's longest serving volunteer, Cathy.



**REBELLE WITH A CAUSE** hosted a spa day for clients at our shelter, bringing healing and self-care during a difficult time.



**AXO** came together to create Boo Baskets for the children in our shelter, to make Halloween more festive.



363 VOLUNTEER HOURS | \$19K+ = THE VALUE OF VOLUNTEER TIME

## A New Spring Campaign Blooms

Our **SPRING CAMPAIGN** brought that same spirit to life. With a board match and overwhelming community enthusiasm, **MSP SURPASSED ITS \$100,000 GOAL.** Community partners, such as Dacha Shaw's Denim Day fundraiser, helped bring our mission to the neighborhood, reinforcing that safety and support start with all of us.

"What stuck with me about the Dacha fundraiser is the impact community has when we all come together to support one another. No one should have to fight alone, and My Sisters Place does a great job at making that message clear to survivors... **it gives me hope that one day there will be a future in which people are no longer afraid to speak up** about intimate partner violence as they know the entire community is there, believes them, and wants to help."

- VANESSA, EVENT ATTENDEE



HOWARD UNIVERSITY VOLUNTEERS DURING THE 2025 DAY OF SERVICE, AUGUST 2025.



# Where Dedication Becomes Possibility: STAFF LEADERSHIP & IMPACT

This year, our staff met expanding client needs with compassion and resolve, and their commitment broke barriers and catalyzed new opportunities for the hundreds of families we served. In response, MSP prioritized giving back to our staff members with recognition, events, opportunities for professional development...and rest!

## ABOVE & BEYOND AWARDS

We proudly honored five Above & Beyond Award recipients, whose excellence strengthened every aspect of our continuum of care. Their work reflects the heart of MSP: responsive, trauma-informed, and survivor-centered.



“THE CLIENTS INSPIRE ME TO EXCEED EXPECTATIONS. WITNESSING THEIR JOY AND SUCCESS AFTER I’VE PROVIDED GUIDANCE AND SUPPORT IS PROFOUNDLY REWARDING.”

- Anaia, Above & Beyond Recipient



“RECEIVING THIS AWARD IS DEEPLY HUMBLING. AS A SURVIVOR MYSELF, MANY MOMENTS AT MSP REMIND ME OF THE SIGNIFICANCE OF OUR WORK. THE ONES THAT STAND OUT THE MOST ARE WHEN OUR CLIENTS TAKE BACK THEIR INDEPENDENCE.”

- Keena, Above & Beyond Award Recipient

## TEAM BONDING

Celebrations and team-building gatherings, from a spring museum scavenger hunt and festive holiday celebration, to a relaxed summer retreat with staff massages, helped strengthen connections across teams and leadership levels, offering space to re-center together and nurture MSP’s culture of self-care and support.

MSP also honored staff longevity through paid sabbaticals, allowing five long-serving team members **TO REST, REFRESH, AND RETURN RENEWED.**



MSP STAFF HOLIDAY PARTY.

# Professional Growth & Training

Professional development remained a priority as MSP prepared for expanding programming in FY26. Staff participated in bi-monthly manager trainings, including ADA Compliance Training, Building Strategies & Goals, and Legal & Ethical Compliance training, while continuing DVACT: Domestic Violence Advocate Core Competency Training (DVACT) certification across the agency. Additionally, staff utilized professional development stipends to enroll in a financial therapy certificate program and ASL classes, enhancing their ability to connect with clients.

Six team members also attended national conferences, including ACA, NABSW, NAWDP, and SHRM, bringing back best practices that strengthen survivor support, housing stability, and economic empowerment.

## MSP BOARD LEADERSHIP

Our Board strengthens MSP’s mission through strategic vision and purposeful guidance. This year, we welcomed three new members, **JAN LEVINE, CAMILLE MEEKINS, AND PEDRO SOTOMAYOR.**

### Board Member Jan Levine shared:

“Joining MSP’s Board has offered me a valuable opportunity to make a difference in our community through advocacy for those experiencing domestic violence. I greatly value MSP’s commitment to offering a full continuum of care and support, including courses on parenting, self-care, and financial literacy. This vision of providing safety, autonomy, and hope in the lives of those experiencing domestic violence inspires me.”

## MSP’S FY2025 BOARD OF DIRECTORS

- |                                     |                    |
|-------------------------------------|--------------------|
| ✿ Shawn M. Wright – Co-Chair        | ✿ Jan Levine       |
| ✿ Santina Rocca – Co-Chair          | ✿ Camille Meekins  |
| ✿ Gilbert Smith – Treasurer         | ✿ Tameika Pope     |
| ✿ Faye Cobb – Secretary             | ✿ Michael Sahakian |
| ✿ Jenny Brody – Executive Committee | ✿ Elaine Scivetti  |
| ✿ Sara Adland                       | ✿ Pedro Sotomayor  |
| ✿ Michelle Kisloff                  | ✿ Bailey Williams  |

MICHELLE, A MEMBER OF MSP’S BOARD OF DIRECTORS, JOINS UNITEDHEALTH GROUP IN ASSEMBLING CARE BASKETS FOR SURVIVORS. 2025.

NDIAH IS HONORED WITH THE ABOVE AND BEYOND AWARD FOR HER OUTSTANDING CONTRIBUTIONS IN 2025.

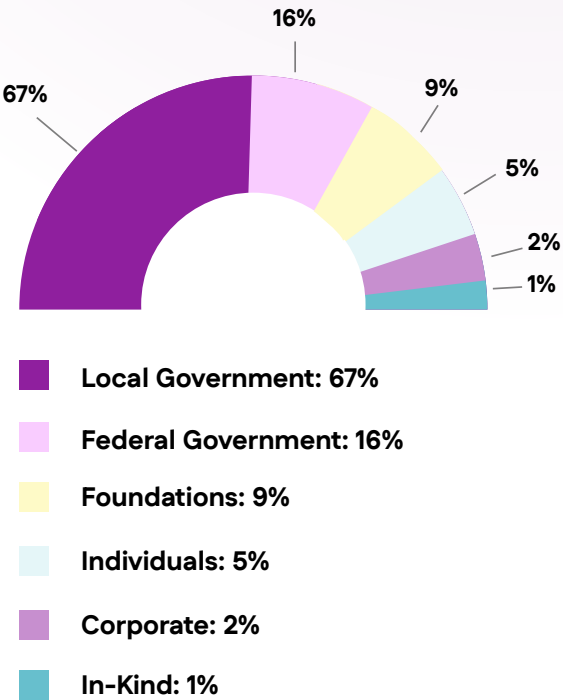


MSP remains committed to responsible stewardship and high-impact programming rooted in the needs and experiences of survivors. Every gift, whether financial, corporate, or in-kind, provides urgent, life-changing access to safety for survivors and their children.

## Your Support Matters

In FY25, **89.6%** of all expenses were directly allocated to support survivor services, underscoring our commitment to maximizing resources for families.

### FY25 Revenue Sources

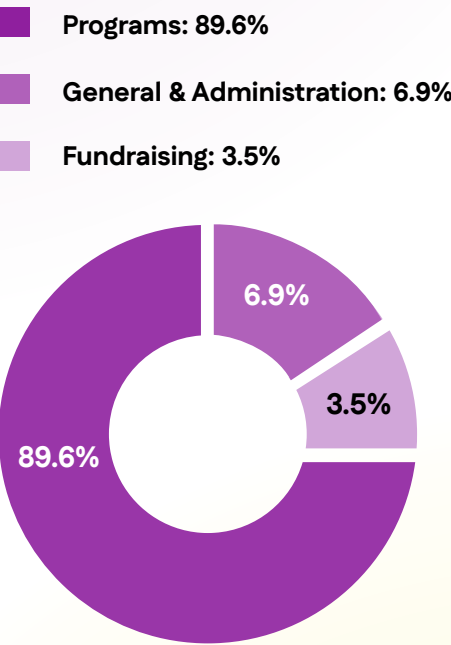


\* Stated here are unaudited FY2025 financials. Completed audited FY2025 financials will be available later in 2026 and posted at [www.mysistersplacedc.org](http://www.mysistersplacedc.org). The financials stated are preliminary and subject to adjustments and modifications after audit completion.

## Thank You to our Institutional Partners

Our foundation and corporate partners remain essential to MSP's sustainable programming, supporting new paths forward. They are crucial for investments in survivors and their children leading toward a safe, stable, and truly independent future, free from violence.

### FY25 Program Expenses



UNITEDHEALTH GROUP TEAM CREATING CARE BASKETS FOR SURVIVORS DURING A VOLUNTEER EVENT. 2025.

## Corporate Sponsors

CHAMPION (\$20- \$34.9K)



CHANGEMAKER (\$10K-\$19.9K)

UNITEDHEALTH GROUP®



ADVOCATE (\$5K-\$9.9K)

- Target Circle
- Concentric Energy Advisors, Inc
- Salesforce

ALLY (\$2.5K-4.9K)

- Peoples Bank
- Giant Food Stores
- Otis

FRIEND (\$1K-\$2.49K)

- Hyman, Phelps & McNamara, P.C.
- Evans Consulting
- Wawa Foundation
- Department of Commerce Federal Credit Union
- Infinity Healthcare Solutions

INTERESTED IN BECOMING A CORPORATE PARTNER?

JOIN OUR [Corporate Giving Program](#) TODAY!



## Foundation PARTNERS

- Alice Shaver Foundation
- Anonymous
- Americas Foundation
- Brendan & Helen Bechtel Foundation
- DC Wise
- Dimick Foundation
- Eugene B. Casey Foundation
- Fabrangen Tzedakah Collective
- Feller Family Charitable Foundation
- Giving Together
- Greater Washington Community Foundation
- Henry Family Fund
- John T. Collins Foundation
- Katherine James Family Foundation
- Lichtenberg Family Foundation
- Manoogian Simone Foundation
- Mars Foundation
- Mary Kay Ash Foundation
- Morris and Gwendolyn Cafritz Foundation
- Philip L. Graham Fund
- Robert Lester Poretsky Family Foundation
- Robinson Mountain Trust
- Rolf and Elizabeth Rosenthal Family Foundation
- Shiffrin Family Foundation
- Susan Stuart Seiler Family Foundation
- The Alisann and Terry Collins Foundation
- The Deck Foundation
- The Greene-Milstein Family Foundation
- Venable Foundation
- William S. Abell Foundation
- Winky Foundation
- Zonta Club of Washington Foundation

# Giving Circles + Looking Ahead

In FY26, MSP will launch **GIVING CIRCLES**, inviting both longtime and new supporters to strengthen the systems of support and long-term programming MSP offers to families who are reclaiming their lives after violence. Together, we are building lasting legacies of care that restore autonomy and help survivors meet the future with hope.



Each level offers meaningful opportunities for connection and insight, reflecting MSP’s commitment to community partnership and survivor-centered care. As Giving Circles grow, MSP will introduce new ways for members to engage with our mission and help shape the future of survivor support in the DC area.



### HOPE CIRCLE (\$1,000–\$2,499):

Provides immediate safety and crisis response.

### EMPOWER CIRCLE (\$2,500–\$4,999):

Strengthens housing stabilization and ongoing case management.

### THRIVE CIRCLE (\$5,000–\$9,999):

Fuels family-centered supports such as workforce development, children’s programming, and financial empowerment.

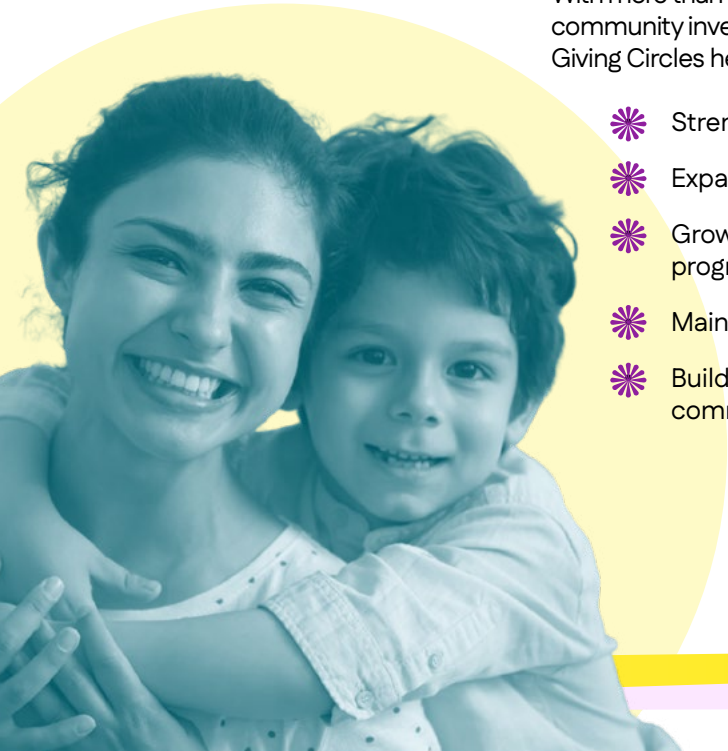
### RISE SOCIETY (\$10,000+):

Fortifies the full continuum of care and expands long-term pathways to autonomy and permanent stability.

## WHY GIVING CIRCLES MATTER

With more than 80% of MSP’s funding coming from government sources, community investment is critical in a rapidly-changing environment. Giving Circles help MSP:

- ✳ Strengthen stabilization-focused housing programs
- ✳ Expand children’s services and enrichment opportunities
- ✳ Grow financial empowerment and workforce development programming
- ✳ Maintain critical emergency funds for families in crisis
- ✳ Build a strong coalition of neighbors and community members committed to safety and healing



# Looking Ahead to FY2026

MSP will continue to sustain our programs, deepen donor engagement, and foster partnerships with volunteers and supporters. We remain committed to investing in the futures of survivors, just as we are committed to investing in our programs and staff.

## WAYS TO GET INVOLVED



Join a Giving Circle



Become a monthly donor



Host a drive or community event



Volunteer with your workplace or community group



Partner with us to provide services to our clients

### TOGETHER, AND ONLY TOGETHER, CAN WE MOVE CLOSER TO ENDING DOMESTIC VIOLENCE.

With the foundation of community and care for our neighbors, we disrupt the cycle of abuse and create new pathways forward.

Each year, MSP uplifts hundreds of families as survivors secure independent housing, enter the workforce with new skills, build financial independence, and rebuild lives free from daily violence.



“I JUST WANTED TO SAY THANK YOU FOR THE OPPORTUNITY YOU HAVE GIVEN ME AND MY FAMILY. I WANT TO THANK EVERYONE IN THE PROGRAM AND BEHIND THE SCENES FOR ALL THEIR INITIATIVE AND HARD WORK TO PROVIDE ME AND MY KIDS WITH SHELTER.”

- Lissette, MSP Client





My Sister's Place is a nonprofit, tax-exempt 501(c)(3) organization. Donations are tax-deductible to the full extent of the law.

Federal EIN: 52-1263256

CFC #97535

United Way #8449

[WWW.MYSISTERSPLACEDC.ORG](http://WWW.MYSISTERSPLACEDC.ORG)

## STAY IN TOUCH!



@mysistersplacedc



PO Box 21463,  
Washington, DC 20009  
[development@mysistersplacedc.org](mailto:development@mysistersplacedc.org)

**FY2025** **IMPACT  
REPORT**